

Assessing the Impact of a Guide to Share Local Data with Community Partners to Improve Health Equity



Putting the pieces together

Public health sharing information with community organizations to promote healthy living for all

CPHA Presentation 2 May 2019



Speakers

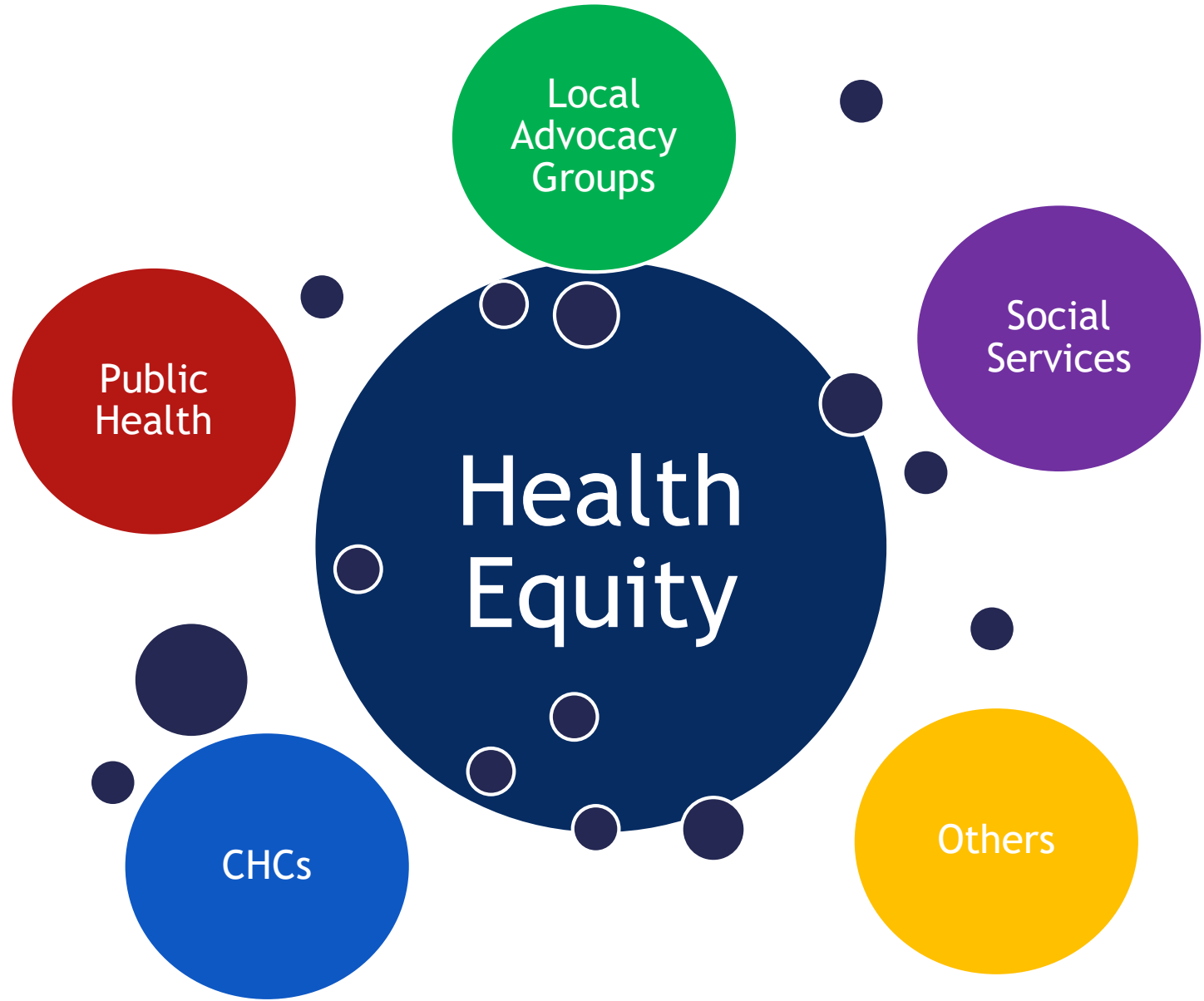
- Dr. Cassandra Ogunniyi
Strategic and Health Equity Initiatives Coordinator
Niagara Region Public Health & Emergency
Services
- Karen Graham
Public Health Nurse
North Bay Parry Sound District Health Unit



Disclosure Statements

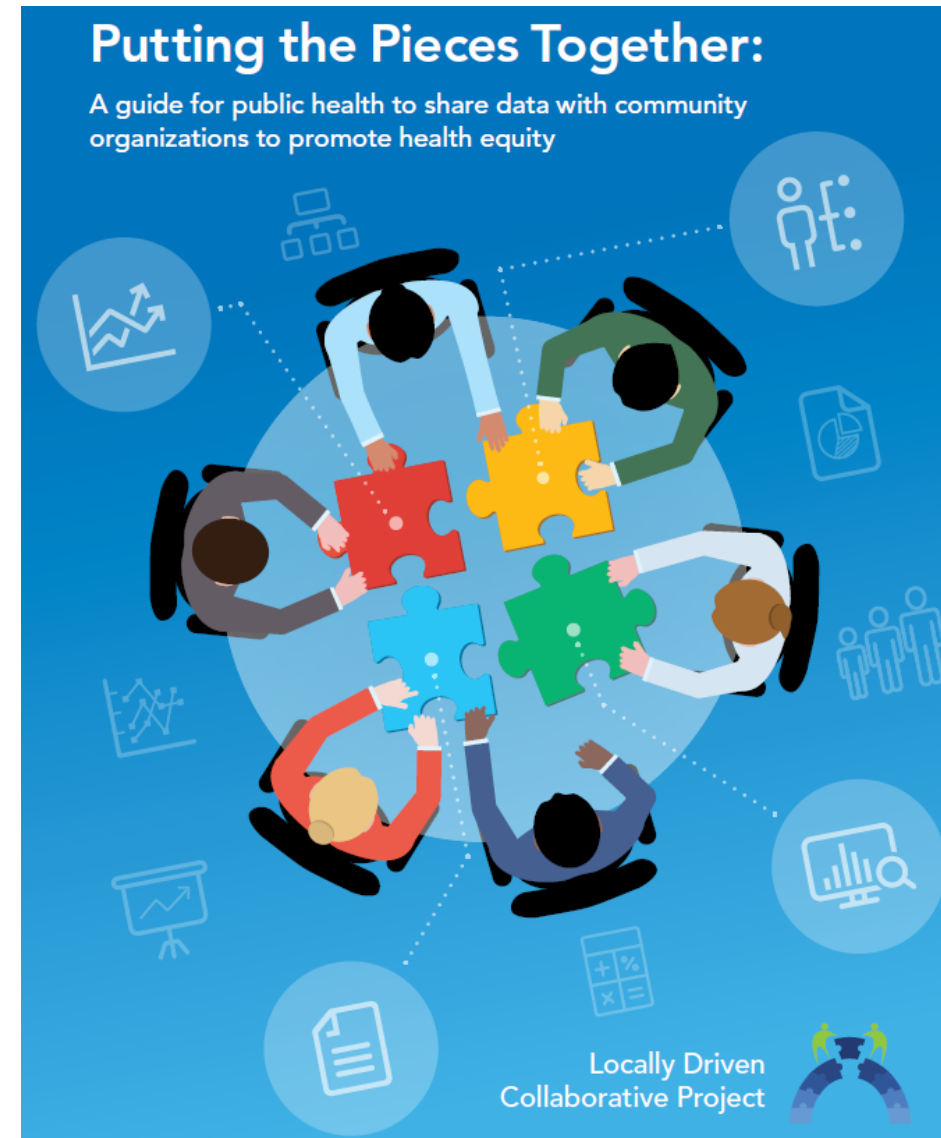
- This project is funded by Public Health Ontario
- The views expressed in this presentation are those of the project team and do not necessarily represent the views of Public Health Ontario
- The presenters have no affiliation (financial or otherwise) with a pharmaceutical, medical device or communications organization.



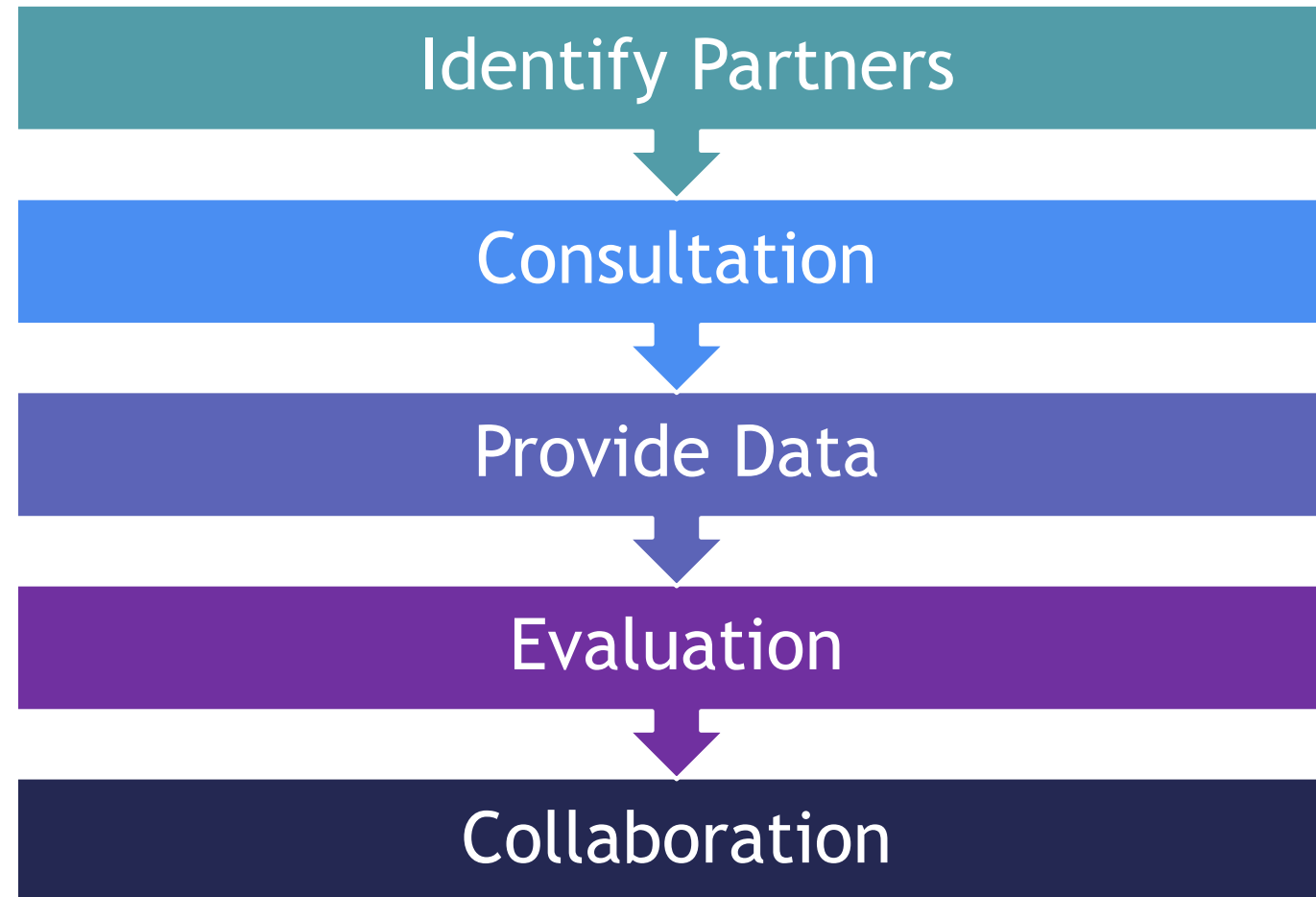


Objectives of Impact Assessment

- Evaluate how data provided to community partners in our pilot may impact their work on health equity issues
- Evaluate how the guidebook can assist LPHAs to share data with their local community partners and revise the guidebook



Process for Data Sharing

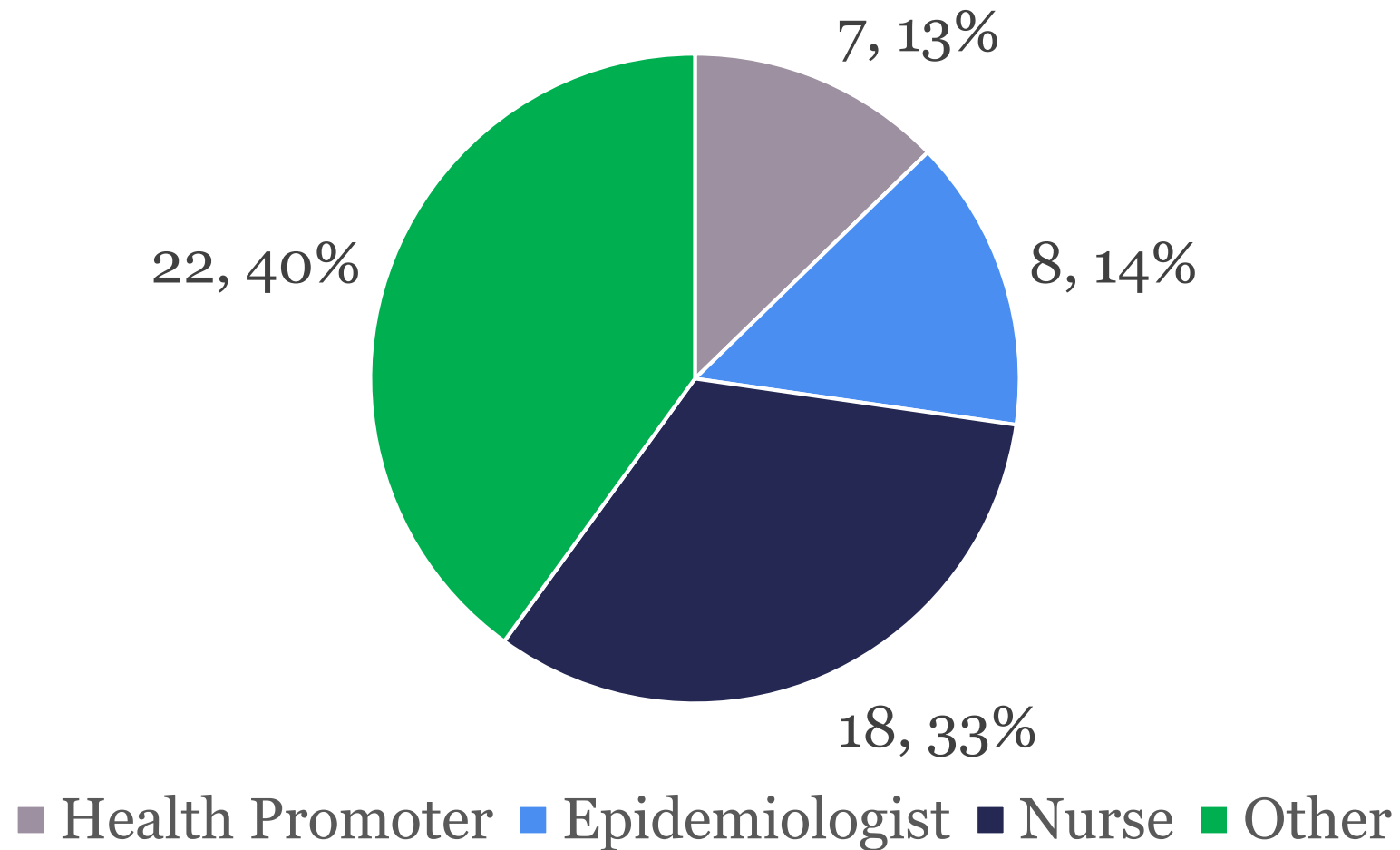


Methods

- Survey
 - 470 contacts through multiple list serves
 - Response rate: 12% (n=55)
- Interviews - Guide
 - 13 people from 9 Local Public Health Agencies (LPHAs)
- Interviews - Pilot
 - 3 organizations

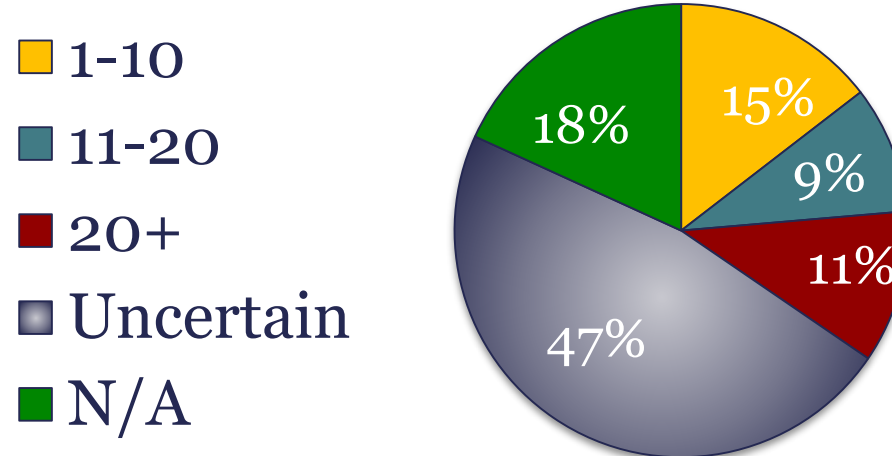


Survey Participants



Survey Feedback - Data Analysis Capabilities

- 85% of LPHAs have one or more staff dedicated to data analysis (n=23)
- Number of organizations share data with



Guide - Feedback

- Most useful
 - Background knowledge
 - Practical steps
 - Appendices
- Challenges
 - Lack capacity to provide level of data needed for sufficient community use



Interviews

- Seven LPHAs not used the guide yet
- All participate in data sharing activities
- Strengths highlighted in the survey reinforced

- Barriers to data sharing
 - Limited data, accuracy, time and skills
 - Organizational culture
 - Restrictions to access data
 - Rural or small geographies



Pilot Evaluation - Data uses

- **Planning**
 - Better understand their communities
 - Identify gaps in current services
 - Strategic planning
- **Funding**
 - Leverage funding
 - Advocate for new programs
- **Education**
 - For staff and politicians about health outcomes in the community



Pilot Evaluation - Other

- Lack of knowledge about LPHA data
- Additional data desired
- Lack of ability to analyze own data
- Frustration of lack of action
- Need collective action from multiple sectors



Recommendations

- 1) Divide guide into two separate documents
- 2) Incorporate case studies
- 3) Include more reference material
- 4) Language and content changes
- 5) Add collaboration to the data sharing process



Conclusions

- Data sharing is essential
- Enhance partnerships
- Advance health equity



Thank you!

Cassandra.Ogunniyi@niagararegion.ca

